

C-32 CB



SPECIFICATIONS

Length overall (motors down)	37' 8" 11.48 m
Length overall (motors up)	39' 10" 12.14 m
Draft (motors down)	33" 0.84 m
Draft (motors up)	26" 0.66 m
Beam	10' 3.05 m
Bridge clearance (mast down)	9' 9" 2.97 m
Bridge clearance (mast up)	18' 5.49 m
Height on trailer (estimated)	13' 6" 4.11 m
Fuel capacity	300 US gal 1,135.6 L
Water capacity	60 US gal 227.1 L
Waste capacity	40 US gal 151.4 L
Weight, dry	12,100 lbs 5,488 kg
Engine	Twin Yamaha F300 outboards



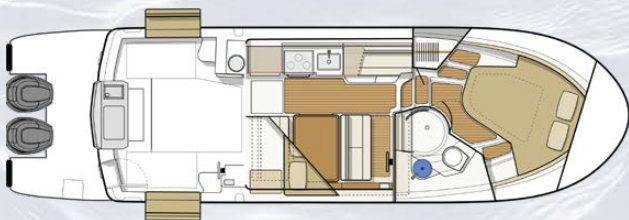
Performance, versatility, and comfort are central to the design of the Cutwater C-32 Command Bridge. The advanced double-stepped, deep-V hull combines speed, efficiency and superior stability. Our Laminar Flow Interrupters allow for smooth, positive cornering. Roll the throttles forward and you'll feel the powerful twin, counter-rotating 300 HP Yamaha outboards propel the C-32 CB to remarkable speeds. Docking is easier than ever with Helm Master joystick steering.

Upon stepping into the comfortable interior, you'll feel fully at home. With wood accents throughout, a fully furnished galley, large dinette, private head and shower, and a luxurious forward stateroom featuring an island bed with recessed LED lighting, the C-32 CB provides a resort-like experience. The large mid-ship stateroom and convertible dinette comfortably sleep up to four additional guests.

You'll find extensive entertaining space on deck. The cockpit hosts expanding seating, rear-facing lounge, an electric BBQ grill, sink and an additional refrigerator. Moving to the foredeck you'll love the hide-away lounge seating to relax and take in the sunset.

Equipped with the latest in marine electronics, the helm is where you're fully in control. Dual Garmin chartplotters with sonar, xHD radar, VHF, electronic throttles, and joystick thruster controls, all work in unison to get you where you want to go, quickly and safely. Step up to the Command Bridge for the same electronic enhanced navigation experience, plus a towering 360-degree view.

Perhaps the most exciting new feature of the C-32 CB is the first of its kind, Clear-Path swim platform boasting thirty-two square feet of level, unobstructed, nonskid decking without any outboard well, rigging tubes or hoses to trip over. Heavy-duty stainless-steel handrails provide stability for boarding, fishing, water-sports, and safe dinghy access. To sum it all up, the C-32 CB is a robust, do it all outboard cruiser that gives you the freedom to get out there and cruise, fish, explore and more!



MODEL FEATURES

ADVANCED CUTWATER HULL

The C-32 CB hull features an innovative combination of a steep, deep-V hull for a smooth ride, a keel pad for planing stability, and reversed chines for quick planing and reduced cornering roll. The double-stepped hull increases efficiency and performance and reduces fuel consumption while the laminar flow interrupters provide smooth, positive cornering performance.

FULL GALLEY

The C-32 CB is well equipped with a full galley for extended cruising. Meal prep is a fun and easy with a refrigerator/freezer, large stainless sink with hot/cold water, a wine/water cooler and a stainless propane stove and oven combination or electric cooktop with convection microwave oven.

COMMAND BRIDGE

Safely accessed by staircase, the command bridge features seating for four as well as a dining table, providing you with an entirely new perspective when entertaining or navigating. The command bridge helm station features a Garmin chartplotter, bow/stern thruster controls, autopilot, VHF and Yamaha engine controls.

CLEAR-PATH SWIM PLATFORM

Our Clear-Path Swim Platform is a revolution in safety and usability aft of the transom, boasting thirty-two square feet of unobstructed, usable deck space with no outboard wells or rigging. A folding boarding ladder is built-in for easy access when swimming and heavy-duty grab rails enhance safety when boarding from dock or tender.

DUAL GARMIN CHARTPLOTTERS & XHD RADAR

Navigation is fun and accurate with dual Garmin touchscreen chartplotters, equipped with GPS, sonar, and xHD radar. Easily monitor fuel flow, engine data, bottom conditions, GPS location, tides and much more.

TRAILERABLE 10FT BEAM

The 10' beam of the C-32 CB allows for a spacious, functional interior while maintaining the ability to trailer your boat to remote and inland destinations. Trailering also provides more options for storing your boat when not in use.

STANDARD FEATURES

PERFORMANCE

Twin 300 HP Yamaha outboards w/ Helm Master EX joystick control, electric steering (DES)

Double stepped hull

Electric trim tabs

Laminar flow interrupters

Bow thruster

Trailerable - 10' beam

ACCOMMODATIONS & INTERIOR COMFORT

Climate control (heat and air conditioning)

Cabin drink holders, 4

Curtains for privacy

Dinette (seats 4) converts to bed

Fully enclosed head

Fusion stereo system (multi-zone)

Hatches, pilothouse roof, solar reflective, 3

Hatches, stateroom, 2

Indirect cabin lighting

Island bed

LED lighting

Electric marine toilet w/ holding tank, pump out

Memory foam mattress

Midship stateroom

Opening portlights, 7

Private forward stateroom

Shower with enclosure

Storage under mattress

TV in salon

TV in stateroom

DECK FEATURES

Anchor package, 22 lb, 50' chain, 200' line

Bow beaching ladder, stainless steel

Bow lounge seating, 3

Bow pulpit

Clear Path engine rigging

Clear Path swim step

EVA foam traction decking

Folding stainless steel mast for trailering

Bolded items: High value features included in the price of the Cutwater C-32 CB. Other manufacturers oftentimes list these features as options with an additional cost.

Forward line storage

Rocket launchers, 6

Rod holders, 2

Swimming ladder, stainless steel

Swim step, with built-in fenders

Washdown system

Windlass, bow and helm controls

COCKPIT

Cockpit cover, hard-top w/ hatches and lights

Cockpit drink holders, 6

Cockpit refrigerator

Cockpit seating, 7+

Cockpit sink

Downrigger plugs and pads

Electric grill

Fold-out gunwale seating

Livewell

Opening glass bulkhead w/ reversible seat

Transom entry door for boarding

HELM

AIS receiving

Autopilot

Color engine display

Digital fuel flow data

Electronic shift and throttle control, twin lever

Dual 12" Garmin Chartplotters w/ GPS and Sonar

Garmin radar, xHD

Helm drink holders, 2

Helm seat, double

USB charging ports

Windshield wipers, 2

GALLEY

Galley cabinets, 3

Galley drawers, 2

Microwave/convection oven combo

Refrigerator/freezer

Sink with hot and cold water

Stove top, electric

Wine/water cooler

MECHANICAL & ELECTRICAL

AC electrical panel

Lithium (LiFePO4) house batteries

Battery charger

DC electrical panel

Galvanic isolator

Inverter

Macerator discharge

Smart Plug Inlet and 30amp Shorepower Cord

Solar panel, 175w with controller

Underwater lights

COMMAND BRIDGE

Access via staircase

Command bridge drink holders, 2

Full helm controls

12" Garmin navigation system

Removable command bridge table

Seating, 4

SAFETY

Carbon monoxide detectors

Courtesy lights

Electric horn

Illuminated compass

Navigation lights

Safety kit: fenders, lines, flares, fire ext, first aid kit, life jackets, boat hook

Spotlight with remote

Swim platform rails

VHF radio, DSC capable

Window defrosters

CONSTRUCTION

Bonded electrical system

Foam-filled fiberglass stringer grid system

Seawater strainer(s)

Self bailing cockpit

Stainless steel cleats, rails, hardware

Vinylester barrier coat

ADDITIONAL FACTORY OPTIONS

Aft cockpit bimini top with boot

Aft cockpit sun and sunset shades

Cockpit freezer (in lieu of cockpit refrigerator)

Command Bridge bimini w/ boot

Dinghy lift w/ 290 RIB inflatable

Factory Delivery Experience

Garmin GXM Weather Antenna

Hull color upgrade (from standard White)



SCAN CODE FOR PRICING AND SPECIFICATIONS



C-32
CB
spec sheet




CUTWATER

47 37th st NE
Auburn, WA, 98002

253-839-5213

www.CutwaterBoats.com

Options, freight & taxes extra.
Prices, specifications, equipment, and options
may change without notice. Information on this
sheet should not be used for navigation. 0425

