

C-30 CB

NORTHWEST &
LUXURY EDITIONS



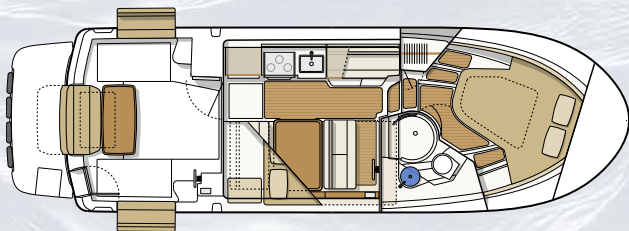
SPECIFICATIONS

Length overall (rigged)	35' 8" 10.87 m
Draft	29" 0.74 m
Beam	10' 3.05 m
Bridge clearance (mast down)	9' 9" 2.97 m
Height on trailer (estimated)	13' 2" 4.01 m
Length on trailer (estimated)	40' 2" 12.24 m
Fuel capacity	180 US gal 681.4 L
Water capacity	60 US gal 227.1 L
Waste capacity	40 US gal 151.4 L
Weight, dry	10,980 lbs 4,980 kg
Engine	Volvo D6, 440 HP common rail diesel engine



Cutwater's Command Bridge variation of the stylish C-30 features upper and lower helm stations for expanded cruising options. With seating for four on the command bridge and a helm seatback that flips forward to face the aft seat and table, you and your guests can enjoy the best view in the harbor. The C-30 Command Bridge features a retractable fiberglass command bridge dash for trailering that enables distant locations to be within easy reach. Access to the command bridge is made safe via secure stairs and hand rails. This family cruiser offers all the advantages of Cutwater's C-30 Sedan, in a large boat that provides spacious interior room, a long list of standard features and comfortable onboard living. An ingenious new cockpit seating arrangement welcomes up to eight adults without crowding, and a new Euro-style galley conceals appliances beneath a hinged countertop that is ideal for buffet or refreshment service.

The Cutwater 30 Command Bridge accommodates six guests in three separate berths, for exceptional privacy and comfort even on extended cruises. On the foredeck, two flush hatches open to reveal cushioned, secure observation seats, along with a central forward lounge. Add to this a long list of other features, and the reliable performance of a 440-h.p. Volvo inboard for efficient express service to distant waterways, and you have a versatile cruiser that ensures unsurpassed enjoyment, year after year.



MODEL FEATURES

LOWER AND UPPER HELM STATION GARMIN NAVIGATION PACKAGES

The lower helm station features a Garmin 8612xsv Chartplotter. The command bridge helm station is equipped with an 8612 Chartplotter. Both units utilize xHD radar, sonar, ais receiving and autopilot with remote. Easily monitor fuel flow, engine data, bottom conditions, GPS location, tides and more from either station.

FULL GALLEY

The C-30 CB is well equipped with a full galley for extended cruising. Meal prep is a fun and easy with a refrigerator/freezer, large stainless sink with hot/cold water, a wine/water cooler and a stainless propane stove and oven combination or electric cooktop with convection microwave oven.

MULTI-USE SEATING

The aft bulkhead window opens, and dinette seat transforms to create a rear facing seat. Our sunset seat and expanding gunwale seats comprise the social cockpit layout capable of hosting up to 7 adults.

ADVANCED CUTWATER HULL

By aerating the running surface and reducing friction, the C-30 Command Bridge's stepped hull provides significant performance and efficiency gains. The low shaft angle and robust keel are a hallmark of our inboard design, increasing efficiency and protecting the propeller.

COMMAND BRIDGE

Safely accessed by staircase, the command bridge features seating for four as well as a dining table, providing you with an entirely new perspective when entertaining or navigating. The command bridge helm station features a Garmin 8612 chartplotter, bow/stern thruster controls, autopilot, VHF and Volvo engine controls.

TRAILERABLE 10FT BEAM

The 10' beam of the C-30 CB allows for a spacious, functional interior while maintaining the ability to trailer your boat to remote and inland destinations. Trailering also provides more options for storing your boat when not in use.

STANDARD FEATURES

PERFORMANCE

440 HP Volvo D6 diesel inboard

Electric trim tabs

Stepped hull

Bow and stern thrusters

Thruster wireless remote

Trailerable - 10' beam

ACCOMMODATIONS & INTERIOR COMFORT

Air conditioning (Luxury edition)

Cabin drink holders, 4

Cabin heater (engine)

Curtains for privacy

Dinette (seats 4) converts to bed

Fully enclosed head

Fusion stereo system (multi-zone)

Hatches, pilothouse roof,
solar reflective, 3

Hatches, stateroom, 2

**Heater (NW: diesel,
Luxury: AC reverse cycle)**

Indirect cabin lighting

Island bed

LED lighting

**Electric marine toilet
w/ holding tank, pump out**

Memory foam mattress

Midship stateroom

Opening portlights, 7

Private forward stateroom

Shower with enclosure

Storage under mattress

TV in salon

TV in stateroom

DECK FEATURES

**Anchor package, 22 lb,
50' chain, 200' line**

Bow beaching ladder, stainless steel

Bow lounge seating, 3

Bow pulpit

EVA foam traction decking

Folding stainless steel mast for trailering

Forward line storage

Rocket launchers, 6

Bolded items: High value features included in the price of the Cutwater C-30 CB.
Other manufacturers oftentimes list these features as options with an additional cost.

Rod holders, 2

Swimming ladder, stainless steel

Swim step, with built-in fenders

Washdown system

Windlass, bow and helm controls

COCKPIT

**Cockpit cover, hard-top
w/ hatches and lights**

Cockpit drink holders, 6

Cockpit refrigerator

Cockpit seating, 7+

Cockpit sink

Cockpit table

**Downrigger plugs and pads
(NW edition)**

Fold-out gunwale seating

**Opening glass bulkhead
w/ reversible seat**

Powered engine hatch

Reversible sunset seat

Transom entry door for boarding

HELM

AIS receiving

Color engine display

Digital fuel flow data

**Electronic shift and throttle control,
single lever**

Garmin autopilot

**Garmin 8612xsv navigation system
w/ GPS and sonar**

Garmin radar, xHD

Helm drink holders, 2

Helm seat, double

USB charging ports

Windshield wipers, 2

GALLEY

Galley cabinets, 3

Galley drawers, 2

Microwave

**Oven (NW: propane,
Luxury: convection/oven combo)**

Refrigerator/freezer

Sink with hot and cold water

**Stove top (NW: propane,
Luxury: electric)**

Wine/water cooler

MECHANICAL & ELECTRICAL

AC electrical panel

Batteries

Battery charger

DC electrical panel

**Generator, diesel (Luxury edition)
Inverter**

Macerator discharge

30A SmartPlug inlet and 50' shore
power cord

Solar panel, 175w with controller

Underwater lights

COMMAND BRIDGE

Access via staircase

Command bridge drink holders, 2

Full helm controls

Garmin navigation system, 8612

Removable command bridge table

Seating, 4

SAFETY

Carbon monoxide detectors

Courtesy lights

Electric horn

Illuminated compass

Navigation lights

**Safety kit: fenders, lines, flares, fire ext,
first aid kit, life jackets, boat hook**

Spotlight with remote

Swim platform rails

VHF radio, DSC capable

Window defrosters

CONSTRUCTION

Bonded electrical system

Foam-filled fiberglass stringer
grid system

Seawater strainer(s)

Self bailing cockpit

Stainless steel cleats, rails, hardware

Vinylester barrier coat

ADDITIONAL FACTORY OPTIONS

Aft cockpit bimini top with boot
Aft cockpit sun and sunset shades
Aft steering, second station w/ electronic controls
Cockpit freezer (in lieu of cockpit refrigerator)
Command Bridge bimini w/ boot
Dinghy, inflatable RIB 290 CSM hypalon
with Weaver davits, stand-off & winch
Downrigger plugs and pads
(LE only, included in NW Edition)
Factory Delivery Experience
Garmin GXM Weather Antenna
Hull color upgrade (from standard White)
Low speed module
Rocket launchers, arch with rod holders (6)
Volvo Five Year Extended Coverage



CUTWATER C-30 CB PACKAGES

The Cutwater C-30 CB is sold fully equipped and ready to cruise with an expansive selection of premium features and outfitted in one of two packages:

NORTHWEST EDITION

Most commonly used in colder climates where air conditioning would not be necessary. Equipped with diesel forced air heater, downrigger plugs & pads, and propane stove & oven.

LUXURY EDITION

Most commonly used in warmer climates where air conditioning is a must. Equipped with air conditioning/ reverse cycle heating, convection oven & microwave combo, diesel generator w/ sound shield, and electric stovetop.

SCAN CODE FOR PRICING AND SPECIFICATIONS



47 37th st NE
Auburn, WA, 98002

253-839-5213

www.CutwaterBoats.com

Options, freight & taxes extra.
Prices, specifications, equipment, and options
may change without notice. Information on this
sheet should not be used for navigation.⁰⁵²⁴

