

CUTWATER 32 COMMAND BRIDGE



Do it all with this no-compromise cruiser. The new Cutwater 32 Command Bridge (C-32 CB) introduces an entirely new perspective to an outboard powered family cruiser. Take the helm from the command bridge and enjoy panoramic views, expansive entertaining space and enhanced control.

Performance, versatility, and comfort are central to the design. The advanced double-stepped, deep-V hull combines speed, efficiency and superior stability. Our patented Laminar Flow Interrupters allow for smooth, positive cornering. Roll the throttles forward and you'll feel the powerful twin, counter-rotating 300HP Yamaha outboards, propel the C-32 CB to remarkable speeds.

Upon stepping into the comfortable interior, you'll feel fully at home. With wood accents throughout, a fully furnished galley, large dinette, private head and shower, and a luxurious master stateroom featuring an island bed with recessed LED lighting, the C-32 CB provides a resort-like experience. The large mid-ship stateroom and convertible dinette comfortably sleep up to four additional guests.

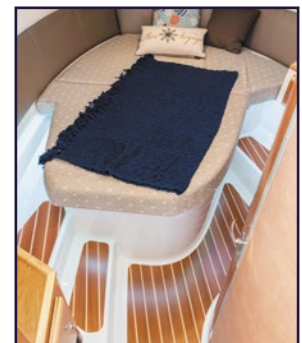
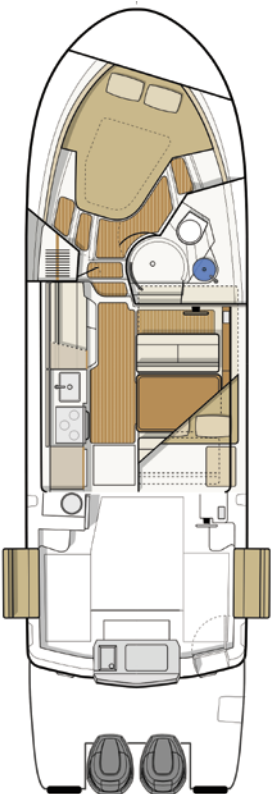
You'll find extensive entertaining space on deck. The cockpit hosts expanding seating, rear-facing lounge, an electric BBQ grill, sink and an additional refrigerator. Moving to the foredeck you'll love the hide-away lounge seating to relax and take in the sunset.

Equipped with the latest in marine electronics, the helm is where you're fully in control. Dual Garmin 8612xsv chartplotters with sonar, xHD radar, VHF, electronic throttles, and joystick thruster controls, all work in unison to get you where you want to go, quickly and safely. Step up to the Command Bridge for the same electronic enhanced navigation experience, plus a towering 360-degree view.

Perhaps the most exciting new feature of the C-32 CB is the first of its kind, Clear-Path swim platform boasting thirty-two square feet of level, unobstructed, nonskid decking without any outboard well, rigging tubes or hoses to trip over. Heavy-duty stainless-steel handrails provide stability for boarding, fishing, watersports, and safe dinghy access. To sum it all up, the C-32 CB is a robust, do it all outboard cruiser that gives you the freedom to get out there and cruise, fish, explore and more!

Specifications

Length rigged LOA (motors down)	37' 8"	11.5 m
Length rigged LOA (motors up)	39' 10"	12.1 m
Beam	10'	3.05 m
Draft (motors up)	26"	.66 m
Draft (motors down)	33"	.84 m
Weight (dry)	12,000 lbs	5,443 kg
Bridge clearance (mast/down)	9' 9"	3 m
Height on factory trailer	13' 6"	4.1 m
Fuel capacity	300 U.S. Gal	1,135.6 L
Water capacity	80 U.S. Gal	302.8 L
Holding tank capacity	40 U.S. Gal	151.4 L



Cutwater 32 Command Bridge

Standard Features

Performance

Twin counter-rotating Yamaha 300 HP outboard engines
 Digital Yamaha engine display with fuel flow data
 Double-stepped hull for increased efficiency and performance
 Laminar Flow Interrupters for smooth, positive cornering (patented)
 Thrusters, stern and bow
 Trim Tabs

Boater Features

32 sq. ft. *Clear-Path* swim platform w/ handrails and fenders
 Anchor locker, S.S. self launching bow roller
 Batteries (7) w/charging relay & switch panel
 Bow platform w/4 rung S.S. ladder (beach access)
 Bow seats/ fender storage
 Cockpit refrigerator/freezer, 12V
 Cockpit table, Cherry, removable
 Convertible cockpit seats, fold out of gunwales
 Docking lights, (2) forward hull
 Fishbox
 Fusion stereo system, AM/FM, Aux, Bluetooth
 Hatches (2), forward cabin roof, opening, translucent w/screens
 Hatches (4), salon house roof, opening, translucent w/screens
 Inverter, 2,000w, pure sine wave
 Mast, stainless steel, hinged
 Island berth with memory foam, master stateroom
 Mid cabin, 6' 8" cushioned, portlights, lamps, gear storage
 Portlight, opening, head (1), forward stateroom (5)
 Powered main cockpit compartment hatch
 Rod holders
 Sport racks
 Swim platform w/S.S. 4 rung ladder
 Transom door for easy access
 Transom livewell
 Transom removable electric Kenyon grill
 Transom sink w/hot and cold water
 TVs (2) w/DVD, salon and master stateroom (12v)
 Washdown system, cockpit raw water
 Water tank level monitor (fresh)
 Windlass 12V, stainless steel with helm and bow controls



Convenience

Dinette, salon, converts to bed, high/low table, sleeps (2)
 Euro-style covered galley, Maple
 Hanging locker
 Hot water tank, 11 gallon
 Outlets 110V (5)
 Power outlets, 12v stbd side, cockpit, mid berth
 Private head, shower enclosure, elec. toilet, vanity, portlights

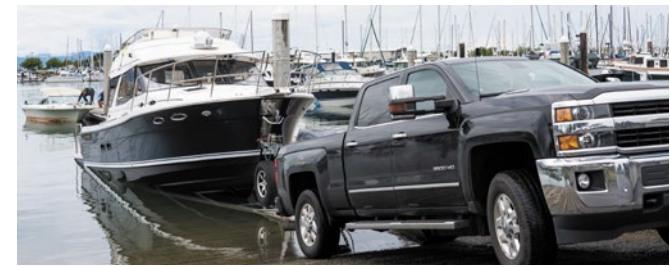
Refrigerator/freezer, 12V
 Sinks (3), hot and cold water system w/demand pump
 Stove/Oven/Microwave (see value packages)
 Wine-water cooler, 12V

Construction

Bonded 12V electrical system
 Bronze thru-hulls
 Fiberglass cockpit liner, self bailing w/non-skid
 Fiberglass stringer system
 Galvanic isolator
 S.S. cleats, rails, ext. hardware
 Shorepower 30 amp/115v, w/50' cord
 Vinylester barrier coat (hull)

Safety

Bilge pump, (2) 12V auto, high bilge alarm
 Carbon monoxide detectors (2), 12V
 Courtesy lights, cockpit, transom platform
 Horns, electric dual trumpet
 Illuminated Compass
 Navigation lights, with light boards
 VHF radio, Garmin with antenna, DSC capable
 Windlass with bow and helm controls
 Windshield wipers (2)



Additional Factory Options

<i>Aft cockpit sun and sunset shades</i>	\$1,500
<i>Aft cockpit bimini top with boot</i>	\$3,440
<i>Aluminum triple axle trailer, electric/hydraulic brakes, spare tire w/bracket</i>	\$14,997
<i>Cockpit ice maker in lieu of standard refrigerator</i>	\$470
<i>Command Bridge Bimini w/ boot</i>	\$3,780
<i>Dinghy lift (lift only, no dinghy)</i>	\$5,480
<i>Dinghy lift w/290 RIB inflatable</i>	\$8,440
<i>Factory Delivery Experience</i>	\$2,500
<i>Garmin Weather Antenna</i>	\$1,000
<i>Hull color upgrade</i>	\$7,500

Cutwater 32 CB Value Package **FACTORY DIRECT PRICING**

All Cutwater 32 models are sold **fully-equipped** and **ready to cruise**. There are two packages to choose from, the Luxury Edition with a 5KW generator and air conditioning or the Northwest Edition with a diesel forced air furnace, propane stove and oven, and downrigger plugs and pads.

Northwest Edition Includes:

- Anchor Package 22# anchor, 50' HT chain, 200' line
- Autopilot, Garmin w/remote
- AGM batteries
- **Diesel heater, forced air furnace**
- **Downrigger plugs and pads**
- LED lights
- Macerator discharge
- **Microwave**
- Navigation package, Garmin chartplotters, dual 8612xsv lower, 8612 upper w/ sonar, xHD radar
- Rocket launchers, arch with rod holders
- Safety kit
- Solar panel, w/control panel
- **Propane stove and oven with tanks and locker**
- Swim platform rails
- Thruster wireless remote (bow and stern)
- Underwater lights

FULLY EQUIPPED, READY TO CRUISE FROM:

\$309,937.00*

**Options, freight & taxes extra*

Prices, specifications, equipment and options may change without notice. 0520



MADE IN USA



Luxury Edition Includes:

- **Air conditioning/rev cycle heat**
- Anchor Package 22# anchor, 50' HT chain, 200' line
- Autopilot, Garmin w/remote
- AGM batteries
- **Convection oven/microwave combo**
- **Generator, 5KW gasoline, w/sound shield**
- LED lights
- Macerator discharge
- Navigation package, Garmin chartplotters, dual 8612xsv lower, 8612 upper w/ sonar, xHD radar
- Safety kit
- Rocket launchers, arch with rod holders
- Solar panel, w/control panel
- **Stove top, dual burner electric**
- Swim platform rails
- Thruster wireless remote (bow and stern)
- Underwater lights

FULLY EQUIPPED, READY TO CRUISE FROM:

\$324,937.00*



17341 Tye St. S.E.
 Monroe, Washington 98272
 Phone 800.349.7198
www.CutwaterBoats.com