

CUTWATER 30 S

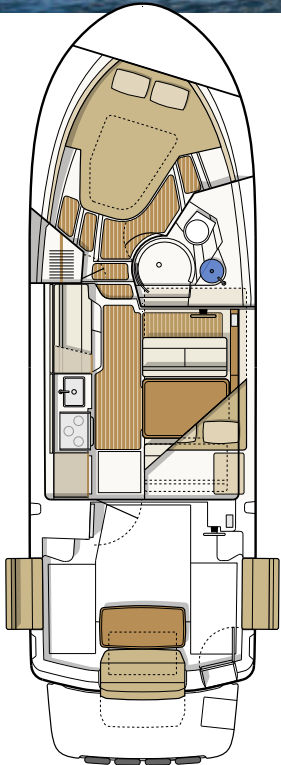


The Cutwater 30 Sedan (C-30 S) is well-known for its stability, comfort, and performance. The stepped, semi-planing hull gets you up to speed quickly and efficiently while the keel aids in precision handling and offers superior drivetrain protection. The spacious C-30 S is rich with standard features that provide for comfortable onboard living. An ingenious cockpit seating arrangement welcomes up to seven adults without crowding, and a new Euro-style galley conceals appliances beneath a hinged counter-top that's ideal for buffet or refreshment service.

The Cutwater 30 accommodates six on three separate berths, for exceptional privacy and comfort even on extended cruises. On the fore deck, two flush hatches open to reveal cushioned, secure observation seats, along with a central forward lounge. Add to this a long list of other features and the reliable performance of the 440-h.p. Volvo diesel engine for efficient express service to distant waterways, and you have a masterpiece of innovation that ensures unsurpassed enjoyment, year after year.

Specifications

LOA molded	30'	9.14 m
LOA rigged (with swim & pulpit)	35' 8"	10.9 m
Bridge clearance (bridge folded)	9' 9"	2.97 m
Beam	10'	3.05 m
Draft	29"	0.73 m
Height on trailer	13' 2"	4 m
Length on trailer	40' 2"	12.24 m
Fuel capacity	180 U.S. Gal	681.4 L
Water capacity	60 U.S. Gal	227.1 L
Holding tank capacity	40 U.S. Gal	151.4 L
Weight (dry)	10,200 lbs	4,626 kg
Engine	Volvo D6, 440 HP	Common Rail Electronic Engine



Standard Features

Performance

Volvo D6 440 HP diesel with color display
Electric trim tabs
Fuel flow data display
Single-Lever engine control, electronic controls (Volvo)
Thrusters, bow and stern



Boater Features

Anchor locker, S.S. self launching bow roller
Batteries (6) w/charging relay & switch panel
Bow platform w/4 rung S.S. ladder (beach access)
Bow seats / fender storage
Cockpit table, Cherry, removable
Cockpit sink and shower
Companion lounge seat
Convertible cockpit seats, fold out of gunwales
Docking lights, (2) forward hull
Fusion stereo system, (6) speakers, AM/FM, Aux, Bluetooth
Hatches (2), forward cabin roof, opening, translucent w/screens
Hatches (4), salon house roof, opening, translucent w/screens
Inverter, 2,000w, PSW
Mast, stainless steel, hinged
Memory foam island berth, master stateroom
Mid cabin, 6' 8" cushioned, portlights, lamps, gear storage
Opening bulkhead w/reversible dinette seat
Portlight, opening, head (1), forward stateroom (5)
Powered engine hatch
Reversible cockpit seat
Rod holders (2)
Seawater strainer
Sport racks
Storage lockers, cabin doors
Swim platform w/S.S. 4 rung ladder, integrated fenders
Transom door
TVs 22" (2) w/DVD, salon and master stateroom (12v)
Washdown system, cockpit raw water
Water tank level monitor (fresh)
Windlass 12V, stainless steel with helm and bow controls

Convenience

Cabin heater, (Engine FWC)
Dinette, salon, converts to bed, high/low table, sleeps (2)
Euro-style covered galley, Maple
Hanging locker
Hot water tank, 11 gallon, (Eng - 110V)
Midship stateroom sleeps two, 110V, 12V, reading light
Outlets 110V (5)
Power outlet, 12v stbd side, cockpit, mid berth

Private head, shower enclosure, elec. toilet, vanity, portlights
Refrigerator/freezer, 12V
Sink, hot and cold water system w/demand pump
Wine-water cooler, 12V

Construction

Bonded 12V electrical system
Bronze rudder, propeller, and thru-hulls
Fiberglass cockpit liner, self bailing w/non-skid
Fiberglass stringer system
S.S. cleats, rails, ext. hardware
Shorepower 30 amp/115v, w/50' cord
Teak and holly cabin sole
Vinylester barrier coat (hull)

Safety

Bilge pump, (2) 12V auto, high bilge alarm
Carbon Monoxide detector (2), 12V
Courtesy lights, cockpit, transom platform
Horns, electric dual trumpet
Illuminated Compass
Navigation lights, with light boards
VHF radio, Garmin with antenna, DSC capable
Windshield wipers (2)

Additional Factory Options

Aft cockpit sun and sunset shades	\$1,499
Aft cockpit bimini top with boot	\$3,440
Aft steering, second station with electronic controls	\$4,970
Aluminum triple axle trailer, electric/hydraulic brakes, spare tire w/bracket	\$14,275
Cockpit freezer in lieu of standard refrigerator	\$600
Cockpit ice maker in lieu of standard refrigerator	\$600
Dinghy, inflatable RIB 290 CSM hypalon with Weaver davits, stand-off & winch	\$5,500
Dinghy motor, 2.5 HP, 4-stroke, storage bracket	\$1,115
Dinghy motor, 6 HP, 4-stroke, storage bracket	\$1,945
Dinghy motor, 9.9 HP, 4-stroke, storage bracket	\$2,935
Downrigger plugs and pads (LE only, included in NW)	\$370
Factory Delivery Experience	\$2,999
Garmin Weather Antenna	\$1,500
Low speed module	\$2,000
Rocket launchers, arch with rod holders (6)	\$1,050
Hull color upgrade	\$7,500

Cutwater 30 S Value Package FACTORY DIRECT PRICING

All Cutwater 30's are sold **fully-equipped** and **ready to cruise**. There are two packages to choose from, the Luxury Edition with a diesel generator and air conditioning or the Northwest Edition with a diesel forced air furnace, propane stove and oven, and downrigger plugs and pads.

Northwest Edition Includes:

- AIS receiving
- Anchor Package 22# anchor, 50' HT chain, 200' line
- Autopilot, Garmin w/remote
- AGM batteries
- **Diesel heater, forced air furnace**
- **Downrigger plugs and pads**
- LED lights
- Macerator discharge
- Microwave
- Navigation package, Garmin 8612xsv chartplotter w/ sonar, xHD radar
- Safety kit
- Solar panel, w/control panel
- **Propane stove and oven with tanks (2) and locker**
- Swim platform rails
- Thruster wireless remote (bow and stern)
- Underwater lights

FULLY EQUIPPED, READY TO CRUISE FROM:

\$314,937.00*

*Options, freight & taxes extra
Prices, specifications, equipment and options may change without notice.
Information on this sheet should not be used for navigation. 0421



Luxury Edition Includes:

- AIS receiving
- **Air conditioning/rev cycle heat**
- Anchor Package 22# anchor, 50' HT chain, 200' line
- Autopilot, Garmin w/remote
- AGM batteries
- **Convection oven/microwave combo**
- **Generator, 5KW diesel, w/ sound shield**
- LED lights
- Macerator discharge
- Navigation package, Garmin 8612xsv chartplotter w/ sonar, xHD radar
- Safety kit
- Solar panel, w/control panel
- **Stovetop, dual burner electric**
- Swim platform rails
- Thruster wireless remote (bow and stern)
- Underwater lights

FULLY EQUIPPED, READY TO CRUISE FROM:

\$330,937.00*



17341 Tye St. S.E.
Monroe, Washington 98272
Phone 800.349.7198
www.CutwaterBoats.com