

CUTWATER 30 CB



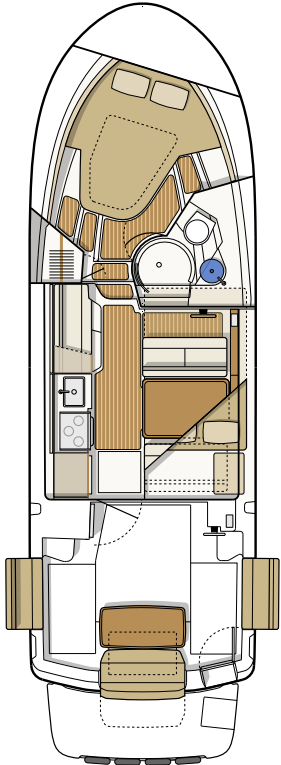
The C-30 CB is the Command Bridge version of the stylish C-30. It features upper and lower helm stations for expanded cruising options. With seating for four on the command bridge and a reversible helm seat that flips to face the aft seat and table, you and your guests can enjoy the best view in the harbor. The C-30 CB features a retractable fiberglass command bridge dash for trailering that enables distant locations to be within easy reach. Access to the command bridge is made safe via secure stairs and hand rails.

This family cruiser offers all the advantages of Cutwater's exclusive stepped keel hull design, in a large boat that provides spacious interior room, a long list of standard features and comfortable onboard living. An ingenious new cockpit seating arrangement welcomes up to seven adults without crowding, and a euro-style galley conceals appliances beneath a hinged counter-top that is ideal for buffet or refreshment service.

The Cutwater 30 Command Bridge accommodates six guests in three separate berths, for exceptional privacy and comfort even on extended cruises. On the foredeck, two flush hatches open to reveal cushioned, secure observation seats, along with a central forward lounge. Add to this a long list of other features, and the reliable performance of the 440-h.p. Volvo diesel engine for efficient express service to distant waterways, and you have a versatile cruiser that ensures unsurpassed enjoyment, year after year.

Specifications

LOA molded	30'	9.14 m
LOA rigged (with swim & pulpit)	35' 8"	10.9 m
Bridge clearance (bridge folded)	9' 9"	2.97 m
Beam	10'	3.05 m
Draft	29"	0.73 m
Height on trailer	13' 2"	4 m
Length on trailer	40' 2"	12.3 m
Fuel capacity	180 U.S. Gal	681.4 L
Water capacity	60 U.S. Gal	227.1 L
Holding tank capacity	40 U.S. Gal	151.4 L
Weight (dry)	10,980 lbs	4,980 kg
Engine	Volvo D6, 440 HP	Common Rail Electronic Engine



Standard Features

Performance

Volvo D6 440 HP diesel with color display
Electric trim tabs
Fuel flow data display
Single-Lever engine control, electronic controls (Volvo)
Thrusters, bow and stern



Boater Features

Anchor locker, S.S. self launching bow roller
Batteries (6) w/charging relay & switch panel
Bow platform w/4 rung S.S. ladder (beach access)
Bow seats/ fender storage
Cockpit table, Cherry, removable
Cockpit sink and shower
Companion lounge seat
Convertible cockpit seats, fold out of gunwales
Docking lights, (2) forward hull
Fusion stereo system, (8) speakers, AM/FM, Aux, Bluetooth
Hatches (2), forward cabin roof, opening, translucent w/screens
Hatches (4), salon house roof, opening, translucent w/screens
Inverter, 2,000w, PSW
Mast, stainless steel, hinged
Memory foam island berth, master stateroom
Mid cabin, 6' 8" cushioned, portlights, lamps, gear storage
Opening bulkhead w/reversible dinette seat
Portlight, opening, head (1), forward stateroom (5)
Powered engine hatch
Reversible cockpit seat
Rod holders (2)
Seawater strainer
Sports rack
Storage lockers, cabin doors
Swim platform w/S.S. 4 rung ladder, integrated fenders
Transom door
TVs 22" (2) w/DVD, salon and master stateroom (12V)
Washdown system, cockpit raw water
Water tank level monitor (fresh)
Windlass 12V, stainless steel with helm and bow controls

Convenience

Cabin heater, (Engine FWC)
Convection oven/ microwave combo (Luxury Edition)
Dinette, salon, converts to bed, high/low table, sleeps (2)
Euro-style covered galley, Maple
Hanging locker
Hot water tank, 11 gallon, (Eng - 110V)
Microwave (NW Edition)
Midship stateroom sleeps two, 110V, 12V, reading light
Outlets 110V (5)

Power outlet, 12v stbd side, cockpit, mid berth
Private head, shower enclosure, elec. toilet, vanity, portlights
Refrigerator/freezer, 12V
Sink, hot and cold water system w/demand pump
Stovetop, dual burner electric (Luxury Edition)
Wine-water cooler, 12V

Construction

Bonded 12V electrical system
Bronze rudder, propeller, and thru-hulls
Fiberglass cockpit liner, self bailing w/non-skid
Fiberglass stringer system
S.S. cleats, rails, ext. hardware
Shorepower 30 amp/115v, w/50' cord
Teak and holly cabin sole
Vinylester barrier coat (hull)

Safety

Bilge pumps, (2) 12V auto, high bilge alarm
Carbon Monoxide detector (2), 12V
Courtesy lights, cockpit, transom platform
Horns, electric dual trumpet
Illuminated Compass
Navigation lights, with light boards
VHF radio, Garmin with antenna, DSC capable
Windshield wipers (2)

Additional Factory Options

Aft cockpit sun and sunset shades	\$1,499
Aft cockpit bimini top with boot	\$3,440
Aft steering, second station with electronic controls	\$4,970
Aluminum triple axle trailer, electric/hydraulic brakes, spare tire w/bracket	\$14,275
Cockpit freezer in lieu of standard refrigerator	\$600
Cockpit ice maker in lieu of standard refrigerator	\$600
Command bridge bimini top w/ boot	\$3,970
Dinghy, inflatable RIB 290 CSM hypalon with Weaver davits, stand-off & winch	\$5,500
Dinghy motor, 2.5 HP, 4-stroke, storage bracket	\$1,115
Dinghy motor, 6 HP, 4-stroke, storage bracket	\$1,945
Dinghy motor, 9.9 HP, 4-stroke, storage bracket	\$2,935
Downrigger plugs and pads (LE only, included in NW)	\$370
Factory Delivery Experience	\$2,999
Garmin Weather Antenna	\$1,500
Low speed module	\$2,000
Rocket launchers, arch with rod holders (6)	\$1,050
Hull color upgrade	\$7,500

Cutwater 30 CB Value Package FACTORY DIRECT PRICING

All Cutwater 30's are sold **fully-equipped** and **ready to cruise**. There are two packages to choose from, the Luxury Edition with a diesel generator and air conditioning or the Northwest Edition with a diesel forced air furnace, propane stove and oven, and downrigger plugs and pads.

Northwest Edition Includes:

- AIS receiving
- Anchor Package 22# anchor, 50' HT chain, 200' line
- Autopilot, Garmin, dual station w/remote
- AGM batteries
- **Diesel heater, forced air furnace**
- **Downrigger plugs and pads**
- LED lights
- Macerator discharge
- Navigation package, Garmin 8612xsv (2) lower helm, 8612 bridge, chartplotters w/sonar, xHD radar
- **Propane stove and oven with tanks (2) and locker**
- Safety kit
- Solar panel, w/control panel
- Swim platform rails
- Thruster wireless remote (bow and stern)
- Underwater lights

FULLY EQUIPPED, READY TO CRUISE FROM:

\$330,937.00*

*Options, freight & taxes extra
Prices, specifications, equipment and options may change without notice.
Information on this sheet should not be used for navigation. 0421



MADE IN USA



Luxury Edition Includes:

- AIS receiving
- **Air conditioning/rev cycle heat**
- Anchor Package 22# anchor, 50' HT chain, 200' line
- Autopilot, Garmin, dual station w/remote
- AGM batteries
- **Generator, 5KW diesel w/ sound shield**
- LED lights
- Macerator discharge
- Navigation package, Garmin 8612xsv (2) lower helm, 8612 bridge, chartplotters w/sonar, xHD radar
- Safety kit
- Solar panel, w/control panel
- Stove, dual burner electric, convection oven/ microwave combo
- Swim platform rails
- Thruster wireless remote (bow and stern)
- Underwater lights

FULLY EQUIPPED, READY TO CRUISE FROM:

\$346,937.00*



17341 Tye St. S.E
Monroe, Washington 98272
Phone 800.349.7198
www.CutwaterBoats.com