

CUTWATER 302 SPORT COUPE



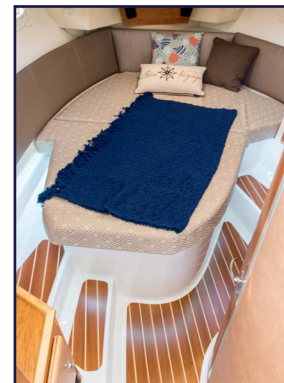
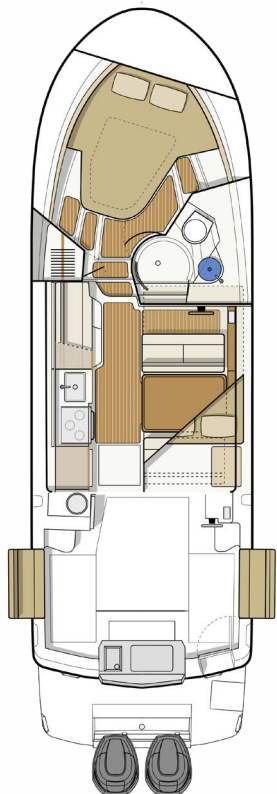
The new Cutwater 302 Sport Coupe (C-302 SC) is an exciting take on our successful Cutwater 30 family cruiser. The Cutwater 302 Sport Coupe is named for its open design that truly invites the outside in and keeps you close to the action. The C-302 SC is powered by twin counter-rotating Yamaha 300 HP outboards that push its double-stepped hull effortlessly across the water. The new C-302 SC hull also incorporates our patented Laminar Flow Interrupter technology for smooth, positive cornering.

The Cutwater 302 Sport Coupe cockpit is perfect for fishing with its large square footage, 30 gallon live well, large fish boxes, rod holders, rocket launchers, sink, and optional outriggers. Once you've caught dinner, food prep is a breeze with the Euro-style galley, which is ideal for buffet or refreshment service. The cockpit is easily converted for entertaining with plenty of seating and an electric Kenyon BBQ grill.

The New Cutwater 302 Sport Coupe accommodates six on three separate berths, for exceptional privacy and comfort even on extended cruises. On the foredeck, two flush hatches open to reveal cushioned, secure observation seats, along with a central forward lounge. Add to this a long list of other features and the customer service that the Cutwater Brand has become known for, and you have a masterpiece of innovation that ensures unsurpassed enjoyment, year after year.

Specifications

LOH (transom to bow)	30'	9.14 m
LOA rigged (inc. motor & pulpit)	37'	10.46 m
Beam	10'	3.05 m
Draft (motors up)	26"	.66 m
Draft (motors down)	33"	.84 m
Weight (dry)	10,200 lbs	4,626 kg
Bridge clearance (mast down)	9' - 9"	2.97 m
Height on trailer	13' - 2"	4.01 m
Fuel capacity	300 U.S. Gal	1,135.6 L
Water capacity	80 U.S. Gal	302.8 L
Holding tank capacity	40 U.S. Gal	151.4 L



Cutwater 302 Sport Coupe

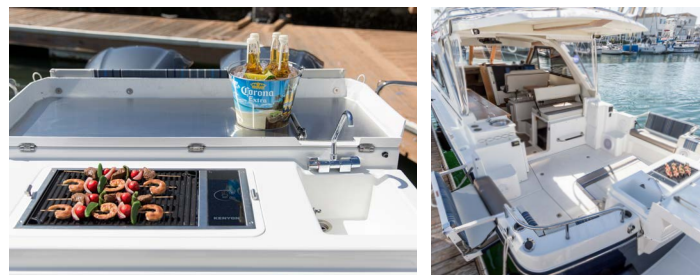
Standard Features

Performance

Twin counter-rotating Yamaha 300 HP outboard engines
 Digital engine display with fuel flow data
 Double-stepped hull for increased efficiency and performance
 Laminar Flow Interrupters for smooth, positive cornering (patented)
 Thrusters, bow and stern
 Trim Tabs

Boater Features

Anchor locker, S.S. self launching bow roller
 Batteries (7) w/charging relay & switch panel
 Bow platform w/4 rung S.S. ladder (beach access)
 Bow seats/ fender storage
 Cockpit refrigerator/freezer, 12V
 Cockpit table, Cherry, removable
 Convertible cockpit seats, fold out of gunwales
 Docking lights, (2) forward hull
 Fishbox
 Fusion stereo, (8) speakers, subwoofer, AM/FM, Aux, Bluetooth
 Hatches (2), forward cabin roof, opening, translucent w/screens
 Hatches (4), salon house roof, opening, translucent w/screens
 Inverter, 2,000w, pure sine wave
 Mast, stainless steel, hinged
 Island berth with memory foam, master stateroom
 Mid cabin, 6' 8" cushioned, portlights, lamps, gear storage
 Portlight, opening, head (1), forward stateroom (5)
 Powered main cockpit compartment hatch
 Rod holders
 Sports rack
 Swim platform w/S.S. 4 rung ladder
 Transom door for easy access
 Transom livewell
 Transom removable electric Kenyon grill
 Transom sink w/hot and cold water
 TVs (2) w/DVD, salon and master stateroom (12v)
 Washdown system, cockpit raw water
 Water tank level monitor (fresh)
 Windlass 12V, stainless steel with helm and bow controls



Convenience

Dinette, salon, converts to bed, high/low table, sleeps (2)
 Euro-style covered galley, Maple
 Hanging locker
 Hot water tank, 11 gallon
 Outlets 110V (5)
 Power outlets, 12v stbd side, cockpit, mid berth

Private head, shower enclosure, elec. toilet, vanity, portlights
 Refrigerator/freezer, 12V
 Sinks (3), hot and cold water system w/demand pump
 Stove/Oven/Microwave (see value packages)
 Wine-water cooler, 12V

Construction

Bonded 12V electrical system
 Bronze thru-hulls
 Fiberglass cockpit liner, self bailing w/non-skid
 Fiberglass stringer system
 S.S. cleats, rails, ext. hardware
 Shorepower 30 amp/115v, w/50' cord
 Vinylester barrier coat (hull)

Safety

Bilge pump, (2) 12V auto, high bilge alarm
 Co monitors (2), 12V
 Courtesy lights, cockpit, transom platform
 Horns, electric dual trumpet
 Illuminated Compass
 Navigation lights, with light boards
 VHF radio, Garmin with antenna, DSC capable
 Windlass with bow and helm controls
 Windshield wipers (2)



Additional Factory Options

Aft cockpit sun and sunset shades	\$1,500
Aft cockpit bimini top with boot	\$3,440
Aft steering, second station with electronic controls	\$4,970
Aluminum triple axle trailer, electric/hydraulic brakes, spare tire w/bracket	\$15,600
Cockpit ice maker in lieu of standard refrigerator	\$470
Factory Delivery Experience	\$2,499
Garmin GXM 52 XM/weather antenna	\$870
Hull color upgrade	\$7,500
Outriggers, attached to sport top	\$2,625

Cutwater 302 SC Value Package FACTORY DIRECT PRICING

All Cutwater 302's are sold **fully-equipped** and **ready to cruise**. There are two packages to choose from, the Luxury Edition with a 5KW generator and air conditioning or the Northwest Edition with a diesel forced air furnace, propane stove and oven, and downrigger plugs and pads.

Northwest Edition Includes:

- Anchor Package 22# anchor, 50' HT chain, 200' line
- Autopilot, Garmin w/remote
- AGM batteries
- **Diesel heater, forced air furnace**
- **Downrigger plugs and pads**
- LED lights
- Macerator discharge
- **Microwave**
- Navigation package, dual Garmin 7612 chartplotters, 4kw radar dome, GPS ant., depth/ff
- Rocket launchers, arch with rod holders
- Safety kit
- Solar panel, w/control panel
- **Propane stove and oven with tanks and locker**
- Swim platform rails
- Thruster wireless remote (bow and stern)
- Underwater lights

FULLY EQUIPPED, READY TO CRUISE FROM:

\$294,937.00*

*Options, freight & taxes extra

Prices, specifications, equipment and options may change without notice. 0818

Luxury Edition Includes:

- **Air conditioning/rev cycle heat**
- Anchor Package 22# anchor, 50' HT chain, 200' line
- Autopilot, Garmin w/remote
- AGM batteries
- **Convection oven/microwave combo**
- **Generator, 5KW gasoline, w/sound shield**
- LED lights
- Macerator discharge
- Navigation package, dual Garmin 7612 chartplotters, 4kw radar dome, GPS ant., depth/ff
- Safety kit
- Rocket launchers, arch with rod holders
- Solar panel, w/control panel
- **Stove top, dual burner electric**
- Swim platform rails
- Thruster wireless remote (bow and stern)
- Underwater lights

FULLY EQUIPPED, READY TO CRUISE FROM:

\$309,937.00*



MADE IN USA



17341 Tye St. S.E.
 Monroe, Washington 98272
 Phone 800.349.7198
www.CutwaterBoats.com